

PLEASE CHECK WWW.MOLEX.COM FOR LATEST PART INFORMATION

Part Number: [0712433007](#)
Status: **Active**
Description: 1.27mm (.050") Pitch DDR DIMM Socket, Single Key, Vertical, Plastic Peg, 184 Circuits

Documents:

[3D Model](#) [Product Specification PS-71243-9999 \(PDF\)](#)
[Drawing \(PDF\)](#) [RoHS Certificate of Compliance \(PDF\)](#)

Agency Certification

CSA LR19980

General

Product Family Memory Module Sockets
 Series [71243](#)
 Component Type Memory Module
 JEDEC Outline N/A
 Product Name DIMM

Physical

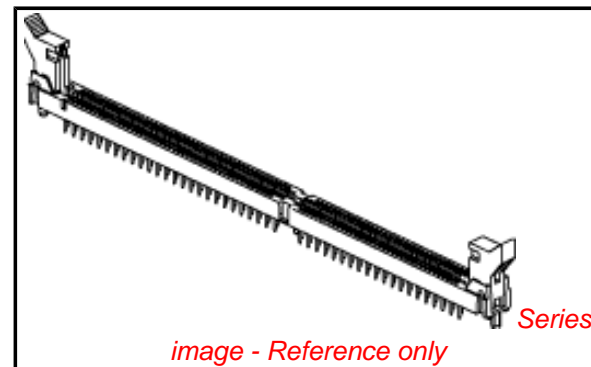
Circuits (Loaded) 184
 Circuits (maximum) 184
 Color - Resin Black, Natural
 Durability (mating cycles max) 25
 Entry Angle Vertical (Top Entry)
 Flammability 94V-0
 Function Key None
 Keying to Mating Part Yes
 Material - Metal Phosphor Bronze
 Material - Plating Mating Gold
 Material - Plating Termination Tin
 Material - Resin High Temperature Thermoplastic
 PC Tail Length (in) 0.127 In
 PC Tail Length (mm) 3.23 mm
 PCB Locator Yes
 PCB Retention Yes
 PCB Thickness Recommended (in) 0.062 In
 PCB Thickness Recommended (mm) 1.57 mm
 Packaging Type Tray
 Pitch - Mating Interface (in) 0.050 In
 Pitch - Mating Interface (mm) 1.27 mm
 Pitch - Term. Interface (in) 0.050 In
 Pitch - Term. Interface (mm) 1.27 mm
 Plating min: Mating (µin) 2
 Plating min: Mating (µm) 0.05
 Plating min: Termination (µin) 150
 Plating min: Termination (µm) 3.81
 Temperature Range - Operating -40°C to +85°C
 Termination Interface: Style Through Hole

Electrical

Current - Maximum per Contact 1A
 Voltage - Maximum 100V AC (RMS)/DC
 Voltage Key Left

Solder Process Data

Duration at Max. Process Temperature (seconds) 40
 Lead-free Process Capability Wave Capable (TH only)



EU RoHS

**ELV and RoHS
 Compliant
 REACH SVHC
 Contains SVHC: No
 Halogen-Free
 Status**

China RoHS



Not Reviewed

**Need more information on product
 environmental compliance?**

Email productcompliance@molex.com
 For a multiple part number RoHS Certificate of
 Compliance, [click here](#)

Please visit the [Contact Us](#) section for any
 non-product compliance questions.

Search Parts in this Series

[71243Series](#)

Max. Cycles at Max. Process Temperature	3
Process Temperature max. C	245

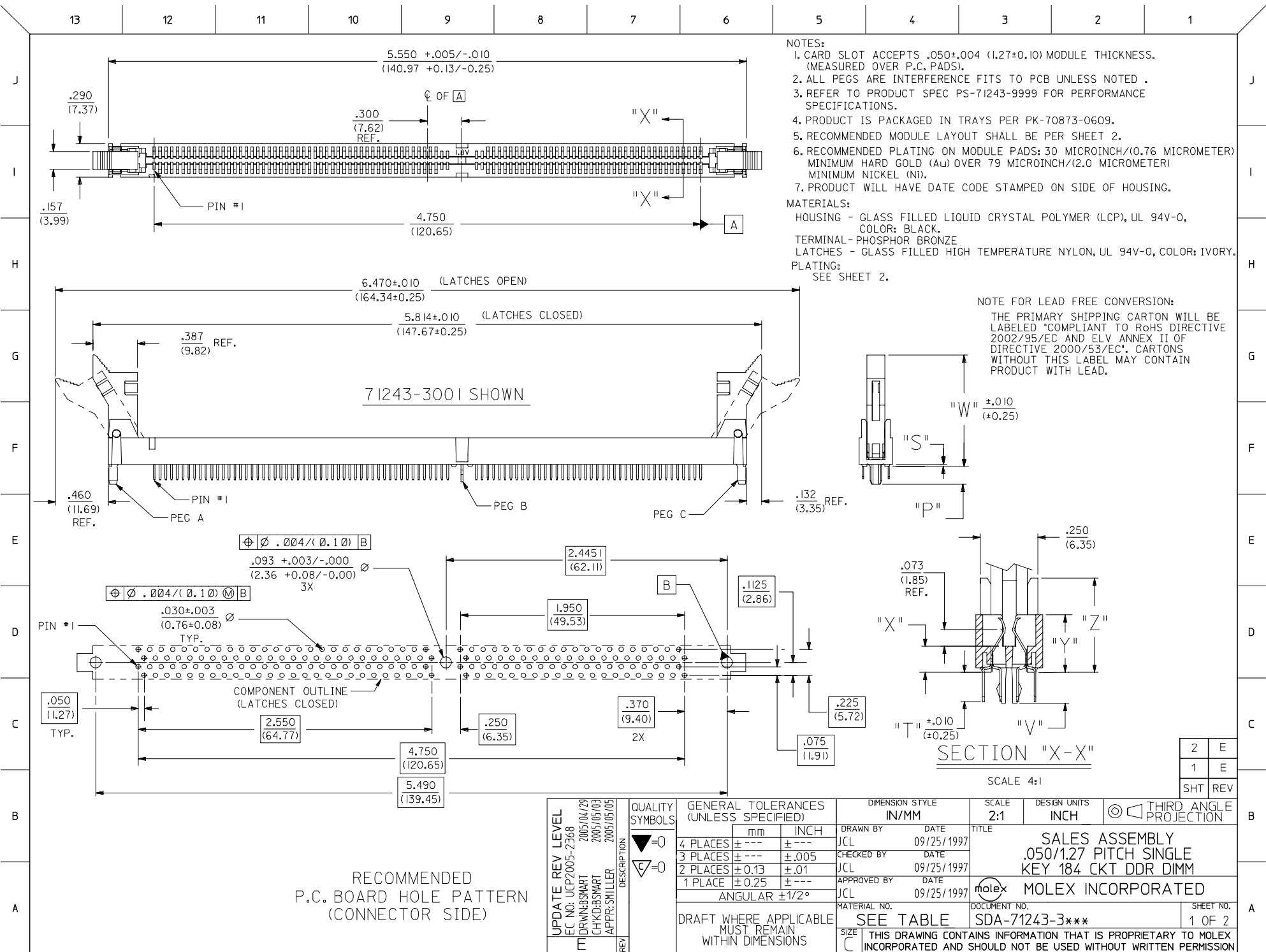
Material Info

Reference - Drawing Numbers

Product Specification	PS-71243-9999
Sales Drawing	SDA-71243-3***

This document was generated on 04/13/2010

PLEASE CHECK WWW.MOLEX.COM FOR LATEST PART INFORMATION



- NOTES:
- CARD SLOT ACCEPTS .050±.004 (1.27±0.10) MODULE THICKNESS. (MEASURED OVER P.C. PADS).
 - ALL PEGS ARE INTERFERENCE FITS TO PCB UNLESS NOTED.
 - REFER TO PRODUCT SPEC PS-71243-9999 FOR PERFORMANCE SPECIFICATIONS.
 - PRODUCT IS PACKAGED IN TRAYS PER PK-70873-0609.
 - RECOMMENDED MODULE LAYOUT SHALL BE PER SHEET 2.
 - RECOMMENDED PLATING ON MODULE PADS: 30 MICROINCH/(0.76 MICROMETER) MINIMUM HARD GOLD (Au) OVER 79 MICROINCH/(2.0 MICROMETER) MINIMUM NICKEL (Ni).
 - PRODUCT WILL HAVE DATE CODE STAMPED ON SIDE OF HOUSING.

MATERIALS:

- HOUSING - GLASS FILLED LIQUID CRYSTAL POLYMER (LCP), UL 94V-0, COLOR: BLACK.
- TERMINAL - PHOSPHOR BRONZE
- LATCHES - GLASS FILLED HIGH TEMPERATURE NYLON, UL 94V-0, COLOR: IVORY.

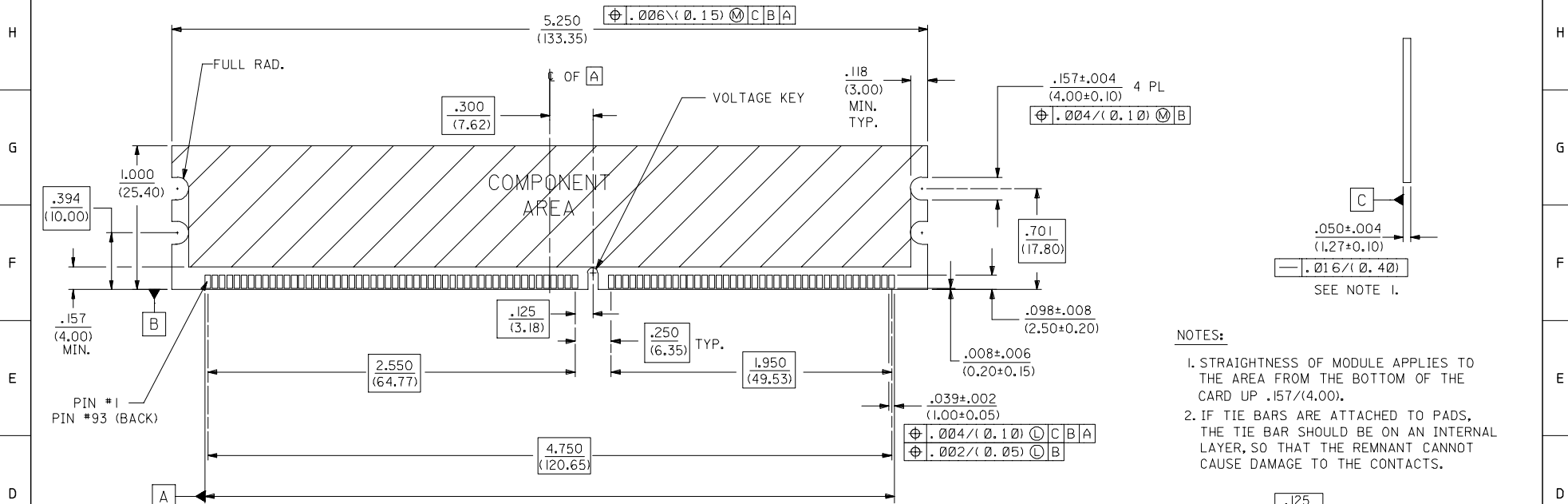
PLATING:
SEE SHEET 2.

NOTE FOR LEAD FREE CONVERSION:
THE PRIMARY SHIPPING CARTON WILL BE LABELED "COMPLIANT TO RoHS DIRECTIVE 2002/95/EC AND ELV ANNEX II OF DIRECTIVE 2000/53/EC". CARTONS WITHOUT THIS LABEL MAY CONTAIN PRODUCT WITH LEAD.

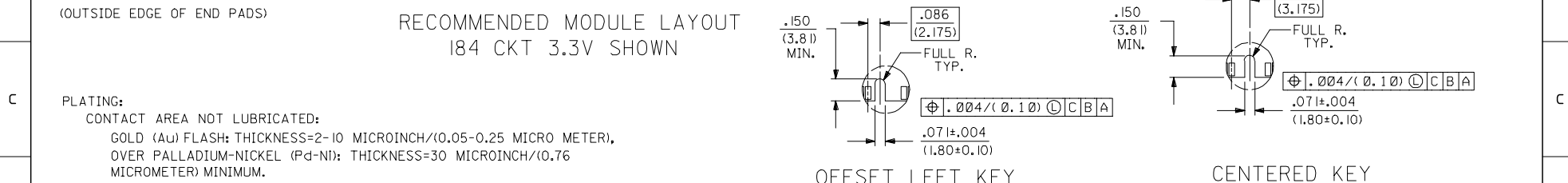
2	E
1	E
SHT	REV

UPDATE REV LEVEL EC NO: UCP2005-2368 MDRWNSWART 2005/04/29 CHKDBSWART 2005/05/03 APPR:SMILLER 2005/05/05 REV DESCRIPTION	QUALITY SYMBOLS	GENERAL TOLERANCES (UNLESS SPECIFIED)	DIMENSION STYLE	SCALE	DESIGN UNITS	THIRD ANGLE PROJECTION	
		mm INCH	IN/MM	2:1	INCH		
		4 PLACES ± --- ± ---	DRAWN BY DATE	JCL 09/25/1997	TITLE	SALES ASSEMBLY	
		3 PLACES ± --- ± .005	CHECKED BY DATE	JCL 09/25/1997	.050/1.27 PITCH SINGLE		
	2 PLACES ± 0.13 ± .01	APPROVED BY DATE	JCL 09/25/1997	KEY 184 CKT DDR DIMM			
	1 PLACE ± 0.25 ± ---	MATERIAL NO.		MOLEX INCORPORATED			
	ANGULAR ±1/2°	DOCUMENT NO.		SDA-71243-3***			
	DRAFT WHERE APPLICABLE MUST REMAIN WITHIN DIMENSIONS	SIZE	SEE TABLE	SHEET NO. 1 OF 2			
		THIS DRAWING CONTAINS INFORMATION THAT IS PROPRIETARY TO MOLEX INCORPORATED AND SHOULD NOT BE USED WITHOUT WRITTEN PERMISSION					

	13	12	11	10	9	8	7	6	5	4	3	2	1			
	PART NUMBER	DESCRIPTION	VOLTAGE KEY	PEG A	PEG B	PEG C	DIM. "P"	DIM. "S"	DIM. "T"	DIM. "V"	DIM. "W"	DIM. "X"	DIM. "Y"	DIM. "Z"	LATCH COLOR	TERMINAL TYPE
J	71243-3001	1.8 VOLT VDDQ	CENTER	PLASTIC PEG	METAL FORKLOCK	PLASTIC PEG	.155 (3.94)	.020 (0.51)	.127 (3.23)	.135 (3.43)	.970 (24.64)	.113 (2.87)	.250 (6.35)	.410 (10.41)	WHITE	NOT LUBRICATED
	71243-3002	2.5 VOLT VDDQ	OFFSET LEFT	PLASTIC PEG	METAL FORKLOCK	PLASTIC PEG	.155 (3.94)	.020 (0.51)	.127 (3.23)	.135 (3.43)	.970 (24.64)	.113 (2.87)	.250 (6.35)	.410 (10.41)	WHITE	NOT LUBRICATED
I	71243-3004	1.8 VOLT VDDQ	CENTER	PLASTIC PEG	METAL FORKLOCK	PLASTIC PEG	.155 (3.94)	.020 (0.51)	.127 (3.23)	.135 (3.43)	.970 (24.64)	.113 (2.87)	.250 (6.35)	.410 (10.41)	WHITE	LUBRICATED
	71243-3005	2.5 VOLT VDDQ	OFFSET LEFT	PLASTIC PEG	METAL FORKLOCK	PLASTIC PEG	.155 (3.94)	.020 (0.51)	.127 (3.23)	.135 (3.43)	.970 (24.64)	.113 (2.87)	.250 (6.35)	.410 (10.41)	WHITE	LUBRICATED
	71243-3007	2.5 VOLT VDDQ	OFFSET LEFT	PLASTIC PEG	NONE	PLASTIC PEG	.155 (3.94)	.020 (0.51)	.127 (3.23)		.970 (24.64)	.113 (2.87)	.250 (6.35)	.410 (10.41)	WHITE	NOT LUBRICATED
	71243-3009	1.8 VOLT VDDQ	CENTER	PLASTIC PEG	METAL FORKLOCK	PLASTIC PEG	.155 (3.94)	.020 (0.51)	.127 (3.23)	.135 (3.43)	.970 (24.64)	.113 (2.87)	.250 (6.35)	.410 (10.41)	BLACK	NOT LUBRICATED



- NOTES:
1. STRAIGHTNESS OF MODULE APPLIES TO THE AREA FROM THE BOTTOM OF THE CARD UP .157/(4.00).
 2. IF TIE BARS ARE ATTACHED TO PADS, THE TIE BAR SHOULD BE ON AN INTERNAL LAYER, SO THAT THE REMNANT CANNOT CAUSE DAMAGE TO THE CONTACTS.



PLATING:

CONTACT AREA NOT LUBRICATED:
GOLD (Au) FLASH: THICKNESS=2-10 MICROINCH/(0.05-0.25 MICRO METER),
OVER PALLADIUM-NICKEL (Pd-NI): THICKNESS=30 MICROINCH/(0.76 MICROMETER) MINIMUM.

CONTACT AREA LUBRICATED:
MOLEX EBI LUBRICANT APPLIED OVER GOLD (Au) FLASH:
THICKNESS=2-10 MICROINCH/(0.05-0.25 MICRO METER),
OVER PALLADIUM-NICKEL (Pd-NI): THICKNESS=30 MICROINCH/(0.76 MICROMETER) MINIMUM.

SOLDER TAILS:
TIN (Sn): THICKNESS=150 MICROINCH/(3.81 MICROMETER) MINIMUM.

UNDERPLATE:
NICKEL (Ni) OVER ENTIRE TERMINAL.

ADD 71243-3009 EC NO: UCP2005-2368 DRW: BSWART 2005/04/29 CHK: CHSMART 2005/05/03 APPR: SMILLER 2005/05/05 REV DESCRIPTION	QUALITY SYMBOLS	GENERAL TOLERANCES (UNLESS SPECIFIED)	DIMENSION STYLE	SCALE	DESIGN UNITS	THIRD ANGLE PROJECTION	
		mm INCH	IN/MM	2:1	INCH		
		4 PLACES ± --- ± ---	DRAWN BY	DATE	TITLE	SALES ASSEMBLY	
		3 PLACES ± --- ± .005	JCL	09/25/1997		0505/1.27 PITCH SINGLE	
	2 PLACES ± 0.13 ± .01	JCL	09/25/1997		KEY 184 CKT DDR DIMM		
	1 PLACE ± 0.25 ± ---	JCL	09/25/1997		MOLEX INCORPORATED		
	ANGULAR ±1/2°						
	DRAFT WHERE APPLICABLE MUST REMAIN WITHIN DIMENSIONS	MATERIAL NO.	DOCUMENT NO.	SHEET NO.			
		SEE TABLE	SDA-71243-3***	2 OF 2			
		THIS DRAWING CONTAINS INFORMATION THAT IS PROPRIETARY TO MOLEX INCORPORATED AND SHOULD NOT BE USED WITHOUT WRITTEN PERMISSION					